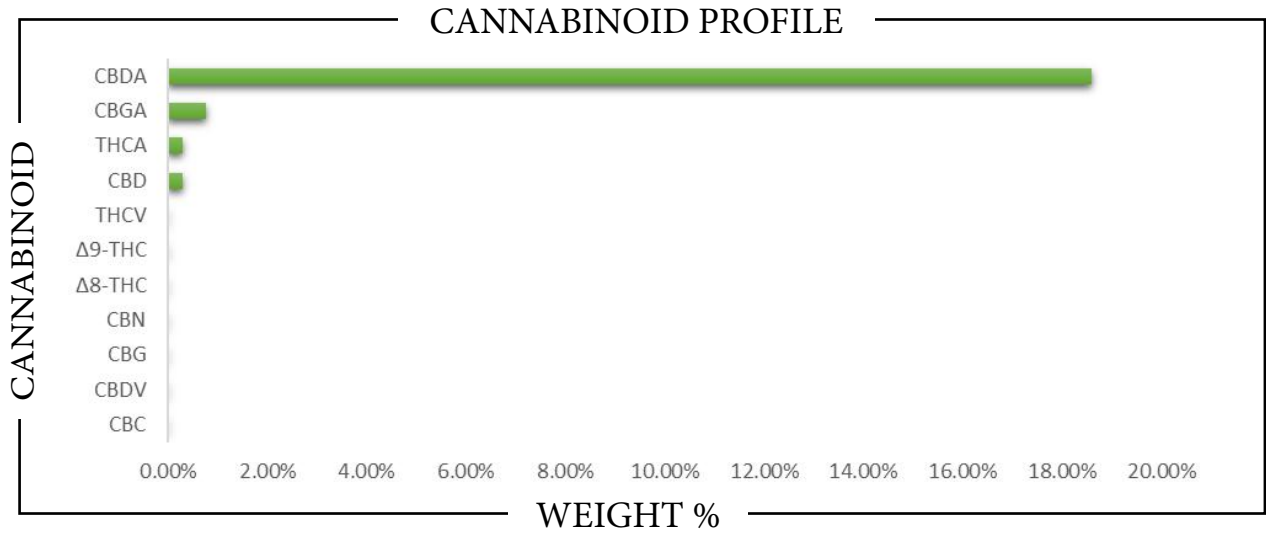


REPORT PREPARED FOR: _____

 PROJECT# _____
 LAB ID _____
 RECEIVED DATE _____
 REPORT DATE _____


SAMPLE NAME: _____



CBC	→	→	→
CBD	→	→	→
CBDA	→	→	→
CBDV	→	→	→
CBG	→	→	→
CBGA	→	→	→
CBN	→	→	→
Δ8-THC	→	→	→
Δ9-THC	→	→	→
THCA	→	→	→
THCV	→	→	→
Total CBD	→	→	→
Total CBG	→	→	→
Total THC	→	→	→

Analysis Method: TP-POT-05
 By HPLC-VWD
 Total THC = (0.877 x THCA) + Δ9-THC
 Total CBD = (0.877 x CBDA) + CBD
 Total CBG = (0.877 x CBGA) + CBG
 ND = Not Detected

Prepared By: _____
 Prep Date: _____
 Batch ID: _____

Analyzed By: _____
 Analysis Date: _____



APPROVED BY:
JUSTIN HALL
 LAB DIRECTOR


 SIGNATURE

SIGNED ON



Certificate of Analysis

Provided for quality control or research and development purposes.

Powered by Confident LIMS
2 of 2

Fern Valley Farms

4725 Fern Valley Rd
Medford, OR 97504
fernvalleycbd@gmail.com
(541) 890-6985
Lic. #AG-R1052550IHG

Sample: 2510CH0347.1902

Strain: Cream Puff
Batch#: ; Batch Size: g
Sample Received: 10/16/2025; Report Created: 10/23/2025
Harvest/Production Date:
Sampling: Random; Environment: Room Temp

Cream Puff

Plant, Hemp
Harvest Process Lot: ; METRC Batch: ; METRC Sample:



Terpenes

1082 GCFID2 20251017-1
10/17/2025

Analyte	Mass %	Mass mg/g	LOQ %	Analyte	Mass %	Mass mg/g	LOQ %
cis-Phytol	0.02	0.2	0.02	γ-Terpinene	<LOQ	<LOQ	0.02
Valencene	0.03	0.3	0.02	Anisole	<LOQ	<LOQ	0.02
Sabinene	<LOQ	<LOQ	0.02	Fenchone	<LOQ	<LOQ	0.02
Ocimene 1	<LOQ	<LOQ	0.02	Isoborneol	<LOQ	<LOQ	0.02
Geraniol	<LOQ	<LOQ	0.02	δ-Limonene	0.29	2.9	0.02
Neral	<LOQ	<LOQ	0.02	Ocimene 2	<LOQ	<LOQ	0.02
α-Humulene	0.26	2.6	0.02	Camphene	<LOQ	<LOQ	0.02
α-Terpinene	<LOQ	<LOQ	0.02	α-Phellandrene	<LOQ	<LOQ	0.02
trans-Phytol	<LOQ	<LOQ	0.02	γ-Terpineol	<LOQ	<LOQ	0.02
Caryophyllene Oxide	0.03	0.3	0.02	Geranyl Acetate	<LOQ	<LOQ	0.02
(-)-β-Pinene	0.05	0.5	0.02	β-Caryophyllene	0.72	7.2	0.02
α-Pinene	0.07	0.7	0.02	Sabinene Hydrate	<LOQ	<LOQ	0.02
Camphor	<LOQ	<LOQ	0.02	Nerol	<LOQ	<LOQ	0.02
(-)-α-Bisabolol	0.10	1.0	0.02	trans-Nerolidol	<LOQ	<LOQ	0.02
α-Cedrene	<LOQ	<LOQ	0.02	Borneol	<LOQ	<LOQ	0.02
Terpinolene	<LOQ	<LOQ	0.02	Hexahydro Thymol	<LOQ	<LOQ	0.02
Endo-Fenchyl Alcohol	0.08	0.8	0.02	Squalene	<LOQ	<LOQ	0.02
p-Isopropyltoluene	<LOQ	<LOQ	0.02	δ-3-Carene	<LOQ	<LOQ	0.02
Azulene	<LOQ	<LOQ	0.02	Eucalyptol	<LOQ	<LOQ	0.02
α-Terpineol	0.06	0.6	0.02	Eugenol	<LOQ	<LOQ	0.02
Cedrol	0.02	0.2	0.02	(-)-Isopulegol	<LOQ	<LOQ	0.02
Citral	<LOQ	<LOQ	0.02	Pulegone	<LOQ	<LOQ	0.02
(-)-Guaiaol	0.10	1.0	0.02	cis-Nerolidol	<LOQ	<LOQ	0.02
Linalool	0.08	0.8	0.02	β-Farnesene	0.08	0.8	0.02
Neryl Acetate	<LOQ	<LOQ	0.02	cis-β-Farnesene	0.17	1.7	0.02
β-Myrcene	0.06	0.6	0.02	α-Farnesene	0.10	1.0	0.02

Primary Aromas



Method: GC-FID CH SOP 4401; based on dry weight; LOQ = Limit of Quantification; NR = Not Reported; ND = Not Detected



5691 SE International Way
Portland, OR
(503) 305-5252
http://chemhistory.com
Lic# OLCC 010-1002015CA5E ORELAP 4057

Patrick Trujillo

Patrick Trujillo
Laboratory Director

Confident LIMS
All Rights Reserved
coa.support@confidentlims.com
(866) 506-5866
www.confidentlims.com



Values reported relate only to the product tested. ChemHistory makes no claims as to the consumer safety or other risks associated with any detected or non-detected levels of any pesticides or residual solvents. This Certificate shall not be reproduced except in full, without the written approval of ChemHistory. QC Blank results of 0 are <LOQ. ORELAP accredited ID#4057, ISO 17025 accredited ID# 5487.01, and OLCC Licensed Cannabis Testing Laboratory #010-1002015CA5E.