

SAMPLE DETAILS
SAMPLE NAME: 007

Other

CULTIVATOR / MANUFACTURER
Business Name:
License Number:
Address:
DISTRIBUTOR / TESTED FOR
Business Name: Ntegrity hemp

License Number:
Address:
SAMPLE DETAIL
Batch Number: 0001

Sample ID: 250906R003

Date Collected: 09/06/2025

Date Received: 09/06/2025

Batch Size:
Sample Size: 2.0 units

Unit Mass: 1 gram per Unit

Serving Size: 1 gram per Serving


Scan QR code to verify authenticity of results.

CANNABINOID ANALYSIS - SUMMARY
Total THC: Not Detected
Total CBD: Not Detected
Sum of Cannabinoids: 54.8607%

Total Cannabinoids: 54.8607%

Total THC/CBD is calculated using the following formulas to take into account the loss of a carboxyl group during the decarboxylation step:

$$\text{Total THC} = \Delta^9\text{-THC} + (\text{THCa} \cdot 0.877)$$

$$\text{Total CBD} = \text{CBD} + (\text{CBDa} \cdot 0.877)$$

$$\text{Sum of Cannabinoids} = \Delta^9\text{-THC} + \text{THCa} + \text{CBD} + \text{CBDa} + \text{CBG} + \text{CBGa} + \text{THCV} + \text{THCVa} + \text{CBC} + \text{CBCa} + \text{CBDV} + \text{CBDVa} + \Delta^8\text{-THC} + \text{CBL} + \text{CBN} + \text{exo-THC} + \Delta^8\text{-THCV} + \Delta^8\text{-iso-THC} + 9\text{S-HHC} + 9\text{R-HHC} + \Delta^{10}\text{-THC} + \Delta^9\text{-THC Acetate}$$

$$\text{Total Cannabinoids} = (\Delta^9\text{-THC} + 0.877 \cdot \text{THCa}) + (\text{CBD} + 0.877 \cdot \text{CBDa}) + (\text{CBG} + 0.877 \cdot \text{CBGa}) + (\text{THCV} + 0.877 \cdot \text{THCVa}) + (\text{CBC} + 0.877 \cdot \text{CBCa}) + (\text{CBDV} + 0.877 \cdot \text{CBDVa}) + \Delta^8\text{-THC} + \text{CBL} + \text{CBN} + \text{exo-THC} + \Delta^8\text{-THCV} + \Delta^8\text{-iso-THC} + 9\text{S-HHC} + 9\text{R-HHC} + \Delta^{10}\text{-THC} + \Delta^9\text{-THC Acetate}$$
SAFETY ANALYSIS - SUMMARY
Residual Solvents: PASS
Heavy Metals: PASS

For quality assurance purposes. Not a Regulatory Hemp Lab Test Report. These results relate only to the sample included on this report. This report shall not be reproduced, except in full, without written approval of the laboratory.

Sample Certification: California Code of Regulations Title 4 Division 19. Department of Cannabis Control Business and Professions Code. Reference: Sections 26100, 26104 and 26110, Business and Professions Code.

Decision Rule: Statements of conformity (e.g. Pass/Fail) to specifications are made in this report without taking measurement uncertainty into account. Where statements of conformity are made in this report, the following decision rules are applied: PASS - Results within limits/specifications, FAIL - Results exceed limits/specifications.

References: limit of detection (LOD), limit of quantification (LOQ), not detected (ND), not tested (NT), $\mu\text{g/g} = \text{ppm}$, $\mu\text{g/kg} = \text{ppb}$



Approved by: Josh Wurzer
Chief Compliance Officer
Date: 03/24/2026

Amendment to Certificate of Analysis 250906R003-001



Residual Solvents Analysis

Residual Solvent analysis utilizing gas chromatography-mass spectrometry (GC-MS).

Method: QSP 1204 - Analysis of Residual Solvents by GC-MS

Total Butanes = n-Butane + 2-Methylpropane (Isobutane)
Total Heptanes = 2,2-Dimethylpentane (Neoheptane) + 2,3-Dimethylpentane + 2,4-Dimethylpentane + 3,3-Dimethylpentane + 2,2,3-Trimethylbutane (Triptane) + 2-Methylhexane (Isoheptane) + 3-Methylhexane + 3-Ethylpentane + n-Heptane
Total Xylenes = 1,2-Dimethylbenzene (o-Xylene) + 1,3-Dimethylbenzene (m-Xylene) / 1,4-Dimethylbenzene (p-Xylene)

RESIDUAL SOLVENTS TEST RESULTS - 09/09/2025 ✔ PASS

| COMPOUND | LOD/LOQ (µg/g) | ACTION LIMIT (µg/g) | MEASUREMENT UNCERTAINTY (µg/g) | RESULT (µg/g) | RESULT |
|---|----------------|---------------------|--------------------------------|---------------|--------|
| Propane | 0.234 / 0.781 | 5000 | N/A | ND | PASS |
| 2-Methylpropane (Isobutane) | 0.052 / 0.173 | | N/A | ND | |
| n-Butane | 0.019 / 0.063 | 5000 | N/A | ND | PASS |
| Total Butanes | | | | ND | |
| n-Pentane | 0.310 / 1.033 | 5000 | N/A | ND | PASS |
| n-Hexane | 0.110 / 0.366 | 290 | ±0.1817 | 7.969 | PASS |
| 2,2-Dimethylpentane (Neoheptane) | 0.493 / 1.642 | | N/A | ND | |
| 2,3-Dimethylpentane | 1.009 / 3.365 | | N/A | ND | |
| 2,4-Dimethylpentane | 0.737 / 2.458 | | N/A | ND | |
| 3,3-Dimethylpentane | 0.198 / 0.660 | | N/A | ND | |
| 2,2,3-Trimethylbutane (Triptane) | 0.521 / 1.738 | | N/A | ND | |
| 2-Methylhexane (Isoheptane) | 0.610 / 2.034 | | N/A | ND | |
| 3-Methylhexane | 0.235 / 0.785 | | N/A | ND | |
| 3-Ethylpentane | 0.304 / 1.012 | | N/A | ND | |
| n-Heptane | 13.12 / 43.72 | 5000 | N/A | ND | PASS |
| Total Heptanes | | | | ND | |
| Benzene | 0.089 / 0.295 | 1 | N/A | ND | PASS |
| Toluene | 0.115 / 0.382 | 890 | N/A | ND | PASS |
| 1,3-Dimethylbenzene (m-Xylene) / 1,4-Dimethylbenzene (p-Xylene) | 0.451 / 1.502 | | N/A | ND | |
| 1,2-Dimethylbenzene (o-Xylene) | 0.387 / 1.289 | | N/A | ND | |
| Total Xylenes | | 2170 | | ND | PASS |
| Methanol | 53.92 / 163.4 | 3000 | N/A | ND | PASS |
| Ethanol | 8.984 / 27.23 | 5000 | N/A | ND | PASS |
| 2-Propanol (Isopropyl Alcohol) | 8.421 / 25.52 | 5000 | N/A | ND | PASS |
| Acetone | 10.59 / 32.08 | 5000 | N/A | ND | PASS |
| Ethyl Acetate | 1.123 / 3.745 | 5000 | N/A | ND | PASS |



Heavy Metals Analysis

Heavy metal analysis utilizing inductively coupled plasma-mass spectrometry (ICP-MS).

Method: QSP 1160 - Analysis of Heavy Metals by ICP-MS

HEAVY METALS TEST RESULTS - 09/08/2025 ✔ PASS

| COMPOUND | LOD/LOQ (µg/g) | ACTION LIMIT (µg/g) | MEASUREMENT UNCERTAINTY (µg/g) | RESULT (µg/g) | RESULT |
|----------|----------------|---------------------|--------------------------------|---------------|--------|
| Arsenic | 0.02 / 0.1 | 1.5 | N/A | ND | PASS |
| Cadmium | 0.02 / 0.05 | 0.5 | N/A | ND | PASS |
| Lead | 0.04 / 0.1 | 0.5 | N/A | ND | PASS |
| Mercury | 0.002 / 0.01 | 3 | N/A | ND | PASS |

NOTES

Reason for Amendment: Order Detail Information Change Sample serving mass provided by client. Sample unit mass provided by client



Cannabinoid Analysis

CANNABINOID TEST RESULTS - 09/08/2025

Tested by high-performance liquid chromatography with diode-array detection (HPLC-DAD).

†Analytes not part of our ISO/IEC 17025 scope of accreditation.

Method: QSP 1157 - Analysis of Cannabinoids by HPLC-DAD or QSP 34181 - Semisynthetic Cannabinoids Analysis by HPLC

TOTAL THC: **Not Detected**

Total THC (Δ^9 -THC+0.877*THCa)

TOTAL CBD: **Not Detected**

Total CBD (CBD+0.877*CBDA)

TOTAL CANNABINOIDS: **54.8607%**

Total Cannabinoids (Total THC) + (Total CBD) + (Total CBG) + (Total THCV) + (Total CBC) + (Total CBDV) + Δ^8 -THC + CBL + CBN + exo-THC + Δ^8 -THCV + Δ^8 -iso-THC + 9S-HHC + 9R-HHC + Δ^{10} -THC + Δ^9 -THC Acetate

TOTAL CBG: **ND**

Total CBG (CBG+0.877*CBGa)

TOTAL THCV: **ND**

Total THCV (THCV+0.877*THCVa)

TOTAL CBC: **ND**

Total CBC (CBC+0.877*CBCa)

TOTAL CBDV: **ND**

Total CBDV (CBDV+0.877*CBDVa)

| COMPOUND | LOD/LOQ (mg/g) | MEASUREMENT UNCERTAINTY (mg/g) | RESULT (mg/g) | RESULT (%) |
|----------------------------|----------------|--------------------------------|---------------------|-----------------|
| 9R-HHC† | 0.116 / 0.388 | ±9.1030 | 359.945 | 35.9945 |
| 9S-HHC† | 0.056 / 0.186 | ±5.8202 | 188.662 | 18.8662 |
| Δ^9 -THC | 0.06 / 0.26 | N/A | ND | ND |
| Δ^8 -THC | 0.1 / 0.4 | N/A | ND | ND |
| THCa | 0.05 / 0.14 | N/A | ND | ND |
| THCV | 0.1 / 0.2 | N/A | ND | ND |
| THCVa | 0.07 / 0.20 | N/A | ND | ND |
| CBD | 0.07 / 0.29 | N/A | ND | ND |
| CBDA | 0.02 / 0.19 | N/A | ND | ND |
| CBDV | 0.04 / 0.15 | N/A | ND | ND |
| CBDVa | 0.03 / 0.53 | N/A | ND | ND |
| CBG | 0.06 / 0.19 | N/A | ND | ND |
| CBGa | 0.1 / 0.2 | N/A | ND | ND |
| CBL | 0.06 / 0.24 | N/A | ND | ND |
| CBN | 0.1 / 0.3 | N/A | ND | ND |
| CBC | 0.2 / 0.5 | N/A | ND | ND |
| CBCa | 0.07 / 0.28 | N/A | ND | ND |
| Δ^{10} -THC† | 0.083 / 0.276 | N/A | ND | ND |
| Δ^8 -iso-THC† | 0.053 / 0.176 | N/A | ND | ND |
| Δ^8 -THCV† | 0.081 / 0.270 | N/A | ND | ND |
| Δ^9 -THC Acetate† | 0.091 / 0.305 | N/A | ND | ND |
| exo-THC† | 0.116 / 0.386 | N/A | ND | ND |
| SUM OF CANNABINOIDS | | | 548.607 mg/g | 54.8607% |

Unit Mass: 1 gram per Unit / Serving Size: 1 gram per Serving

| | |
|---------------------------------|--------------------|
| Δ^9 -THC per Unit | ND |
| Δ^9 -THC per Serving | ND |
| Total THC per Unit | ND |
| Total THC per Serving | ND |
| CBD per Unit | ND |
| CBD per Serving | ND |
| Total CBD per Unit | ND |
| Total CBD per Serving | ND |
| Sum of Cannabinoids per Unit | 548.607 mg/unit |
| Sum of Cannabinoids per Serving | 548.607 mg/serving |
| Total Cannabinoids per Unit | 548.607 mg/unit |
| Total Cannabinoids per Serving | 548.607 mg/serving |

SAMPLE DETAILS

SAMPLE NAME: thca/d8 infused
Flower, Inhalable

CULTIVATOR / MANUFACTURER
Business Name:
License Number:
Address:

DISTRIBUTOR / TESTED FOR
Business Name:
License Number:
Address:

SAMPLE DETAIL

Batch Number: 02
Sample ID: 241025N017

Date Collected: 10/25/2024 Date Received: 10/25/2024 Batch Size:
Sample Size: 7.0 grams
Unit Mass: 7 grams per Unit
Serving Size: 7 grams per Serving



Scan QR code to verify authenticity of results.

CANNABINOID ANALYSIS - SUMMARY

Total THC: 2.01%

Total CBD: 13.0%

Sum of Cannabinoids: 20.46%

Total Cannabinoids: 18.46%

Total THC/CBD is calculated using the following formulas to take into account the loss of a carboxyl group during the decarboxylation step:
Total THC = $\Delta^9\text{-THC} + (\text{THCa} \cdot 0.877)$
Total CBD = $\text{CBD} + (\text{CBDA} \cdot 0.877)$
Sum of Cannabinoids = $\Delta^9\text{-THC} + \text{THCa} + \text{CBD} + \text{CBDA} + \text{CBG} + \text{CBGa} + \text{THCV} + \text{THCVa} + \text{CBC} + \text{CBCa} + \text{CBDV} + \text{CBDVa} + \Delta^8\text{-THC} + \text{CBL} + \text{CBN}$
Total Cannabinoids = $(\Delta^9\text{-THC} + 0.877 \cdot \text{THCa}) + (\text{CBD} + 0.877 \cdot \text{CBDA}) + (\text{CBG} + 0.877 \cdot \text{CBGa}) + (\text{THCV} + 0.877 \cdot \text{THCVa}) + (\text{CBC} + 0.877 \cdot \text{CBCa}) + (\text{CBDV} + 0.877 \cdot \text{CBDVa}) + \Delta^8\text{-THC} + \text{CBL} + \text{CBN}$

For quality assurance purposes. Not a Regulatory Hemp Lab Test Report. These results relate only to the sample included on this report. This report shall not be reproduced, except in full, without written approval of the laboratory.

Sample Certification: California Code of Regulations Title 4, Division 19, Department of Cannabis Control Business and Professions Code. Reference: Sections 26100, 26104 and 26110, Business and Professions Code.

Decision Rule: Statements of conformity (e.g. Pass/Fail) to specifications are made in this report without taking measurement uncertainty into account. Where statements of conformity are made in this report, the following decision rules are applied: PASS - Results within limits/specifications. FAIL - Results exceed limits/specifications.

References: limit of detection (LOD), limit of quantification (LOQ), not detected (ND), not tested (NT)

Yasmin Kaldar
LQC verified by: Yasmin Kaldar
Job Title: Senior Laboratory Analyst
Date: 10/28/2024

Josh Wurzer
Approved by: Josh Wurzer
Title: Chief Compliance Officer
Date: 10/28/2024

Ntegrity hemp

Sample 681-140325-540

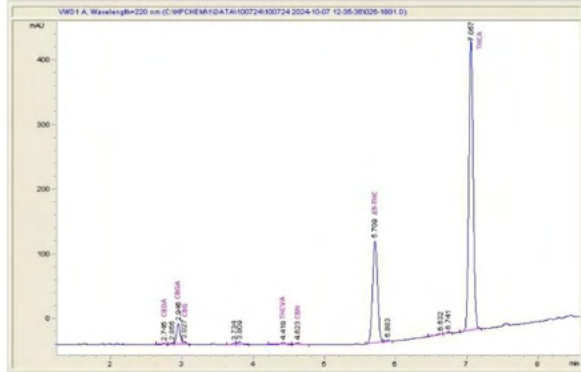
GG

Sample Submitted: 05-05-2025; Report Date: 05-08-2025

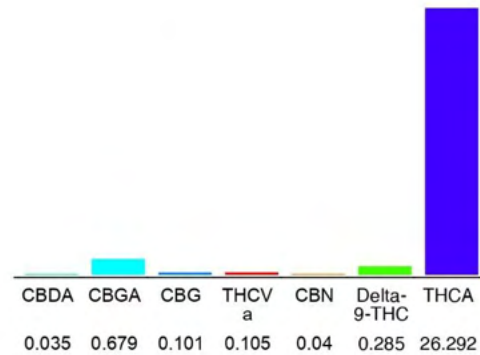
GG

Plant Material: Hemp Flower

Chromatogram



Cannabinoid Profile



Cannabinoid Profile by HPLC

0.29%
Delta-9-THC

0.00%
CBD

27.54%
Total Cannabinoids

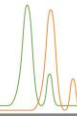
| Cannabinoid | % wt | mg/g |
|-----------------------------|--------------|---------------|
| CBDA | 0.035 | 0.35 |
| CBGA | 0.679 | 6.79 |
| CBG | 0.101 | 1.01 |
| THCVa | 0.105 | 1.05 |
| CBN | 0.04 | 0.4 |
| Delta-9-THC | 0.285 | 2.85 |
| THCA | 26.29 | 262.92 |
| Total Cannabinoids | 27.54 | 275.4 |
| Calculated Total THC | 23.34 | 233.41 |
| Calculated CBD Yield | 0.03 | 0.31 |

Calculated Total THC = Delta-9-THC + 0.877 * THCA
 Calculated Maximum CBD Yield = CBD + 0.877 * CBDA

Marin Analytics, LLC
 250 Bel Marin Keys Blvd, Suite D4
 Novato, CA 94949
 833-321-TEST / info@marinanalytics.com

Mike Clemmons
 Lab Manager

This sample has been tested by Marin Analytics, LLC using valid testing methodologies and a quality system. Values reported relate only to the sample tested. Marin Analytics, LLC makes no claims as to the efficacy, safety, or other risks associated with any detected or non-detected levels of any compounds reported herein. This Certificate shall not be reproduced except in full without the written approval of Marin Analytics, LLC. Copyright 2023 Marin Analytics, LLC All Rights Reserved.



Sample 872-070825-024

GR

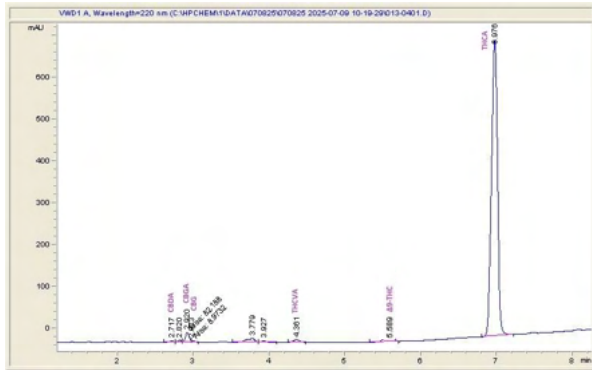
Sample Submitted: 07-08-2025; Report Date: 07-14-2025

Ntegrity hemp

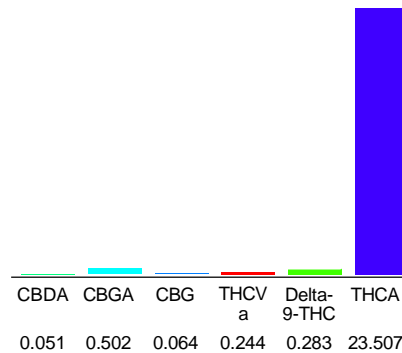
GR

Plant Material: Hemp Flower

Chromatogram



Cannabinoid Profile



Cannabinoid Profile by HPLC

0.28%
Delta-9-THC

0.00%
CBD

24.65%
Total Cannabinoids

| Cannabinoid | % wt | mg/g |
|-----------------------------|--------------|---------------|
| CBDA | 0.051 | 0.51 |
| CBGA | 0.502 | 5.02 |
| CBG | 0.064 | 0.64 |
| THCVa | 0.244 | 2.44 |
| Delta-9-THC | 0.283 | 2.83 |
| THCA | 23.51 | 235.07 |
| Total Cannabinoids | 24.65 | 246.5 |
| Calculated Total THC | 20.90 | 209.01 |
| Calculated CBD Yield | 0.04 | 0.45 |

Calculated Total THC = Delta-9-THC + 0.877 * THCA
Calculated Maximum CBD Yield = CBD + 0.877 * CBDA

Marin Analytics, LLC

250 Bel Marin Keys Blvd, Suite D4
Novato, CA 94949

833-321-TEST / info@marinanalytics.com

Mike Clemmons
Lab Manager

Ntegrity hemp

Sample 681-140325-866

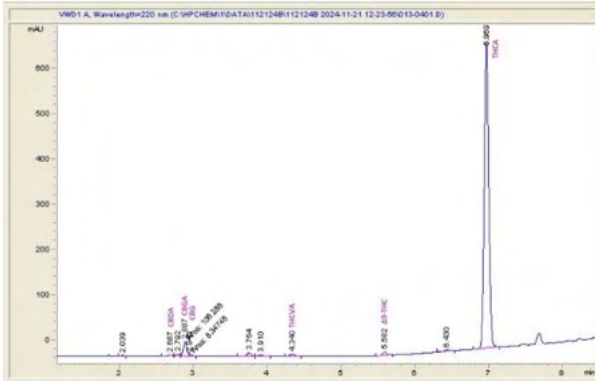
Holy Grail x Topcherry OG

Sample Submitted: 05-13-2025; Report Date: 05-16-2025

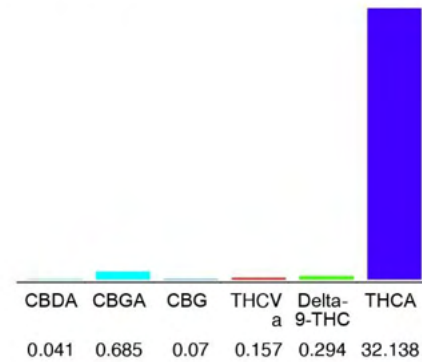
Holy Grail x Topcherry OG

Plant Material: Hemp Flower

Chromatogram



Cannabinoid Profile



Cannabinoid Profile by HPLC

0.29%

Delta-9-THC

0.00%

CBD

33.39%

Total Cannabinoids

| Cannabinoid | % wt | mg/g |
|-----------------------------|--------------|---------------|
| CBDA | 0.041 | 0.41 |
| CBGA | 0.685 | 6.85 |
| CBG | 0.07 | 0.7 |
| THCVa | 0.157 | 1.57 |
| Delta-9-THC | 0.294 | 2.94 |
| THCA | 32.14 | 321.38 |
| Total Cannabinoids | 33.39 | 333.9 |
| Calculated Total THC | 28.48 | 284.80 |
| Calculated CBD Yield | 0.04 | 0.39 |

Calculated Total THC = Delta-9-THC + 0.877 * THCA
 Calculated Maximum CBD Yield = CBD + 0.877 * CBDA

Marin Analytics, LLC
 250 Bel Marin Keys Blvd, Suite D4
 Novato, CA 94949

833-321-TEST / info@marinanalytics.com

Mike Clemmons
 Lab Manager

Ntegrity hemp

Sample 884-101325-004

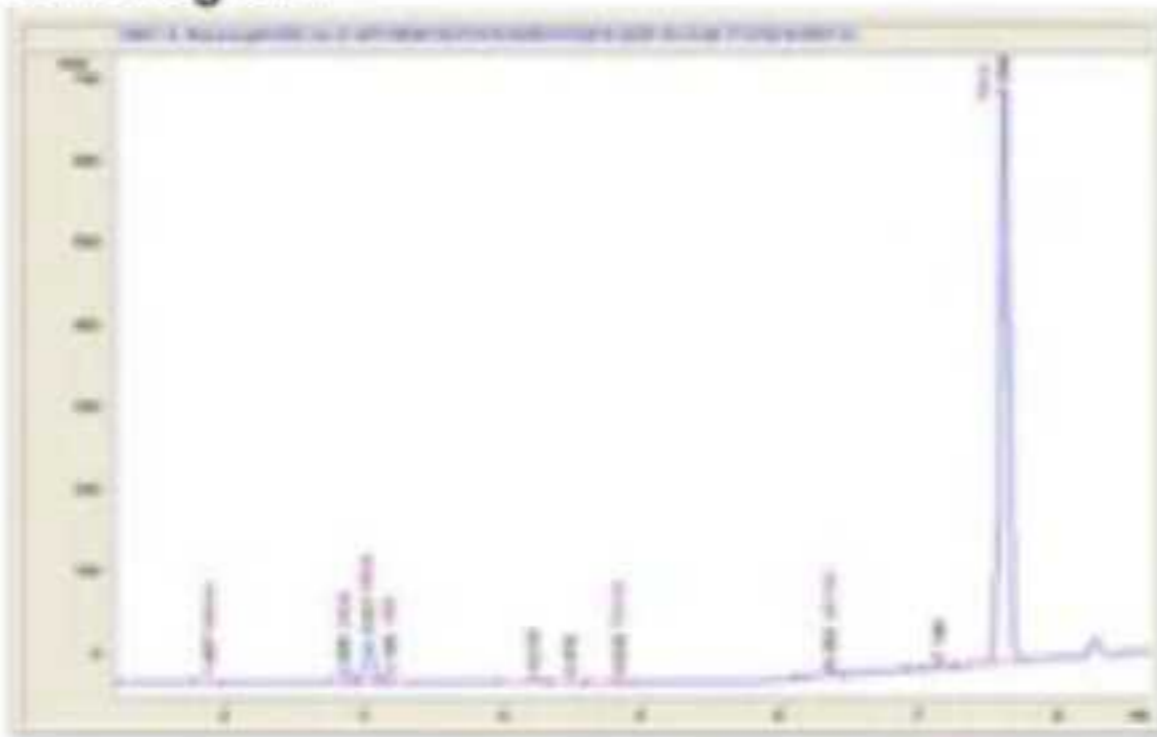
Strawberry Cough - Hemp

Sample Submitted: 10-13-2025; Report Date: 10-20-2025

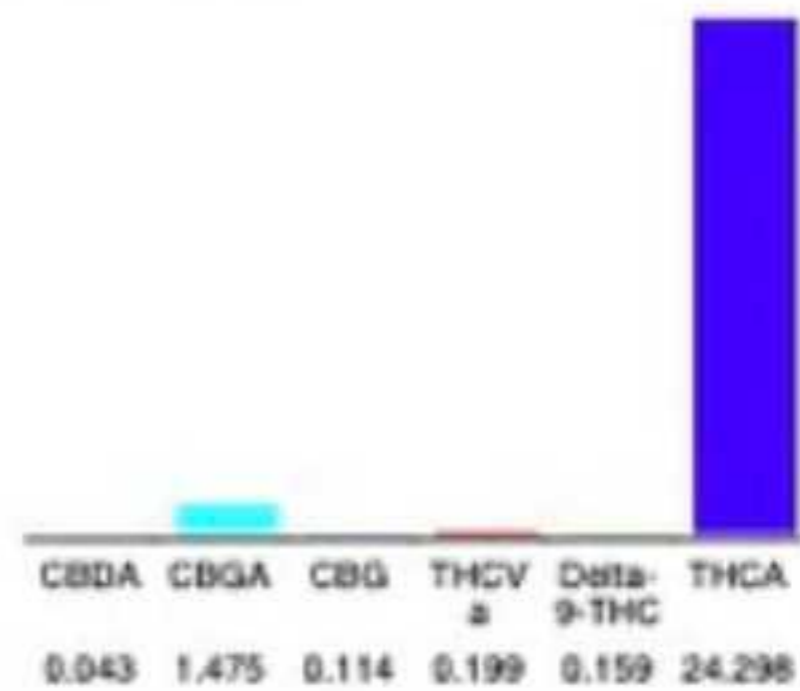
Strawberry Cough - Hemp

Plant Material: Hemp Flower

Chromatogram



Cannabinoid Profile



Cannabinoid Profile by HPLC

0.16%
Delta-9-THC

0.00%
CBD

26.29%
Total Cannabinoids

| Cannabinoid | % wt | mg/g |
|-----------------------------|--------------|---------------|
| CBDA | 0.043 | 0.43 |
| CBGA | 1.475 | 14.75 |
| CBG | 0.114 | 1.14 |
| THCVa | 0.199 | 1.99 |
| Delta-9-THC | 0.159 | 1.59 |
| THCA | 24.3 | 242.98 |
| Total Cannabinoids | 26.29 | 262.9 |
| Calculated Total THC | 21.47 | 214.68 |
| Calculated CBD Yield | 0.04 | 0.38 |

Calculated Total THC = Delta-9-THC + 0.877 * THCA
 Calculated Maximum CBD Yield = CBD + 0.877 * CBDA

Marin Analytics, LLC
 250 Bel Marin Keys Blvd, Suite D4
 Novato, CA 94949

833-321-TEST / info@marinanalytics.com

Mike Clemmons
 Lab Manager

This sample has been tested by Marin Analytics, LLC using valid testing methodologies and a quality system. Values reported relate only to the sample tested. Marin Analytics, LLC makes no claims as to the efficacy, safety, or other risks associated with any detected or non-detected levels of any compounds reported herein. This Certificate shall not be reproduced except in full without the written approval of Marin Analytics, LLC. Copyright 2023 Marin Analytics, LLC All Rights Reserved.

Ntegrityhemp

Sample 884-101325-006

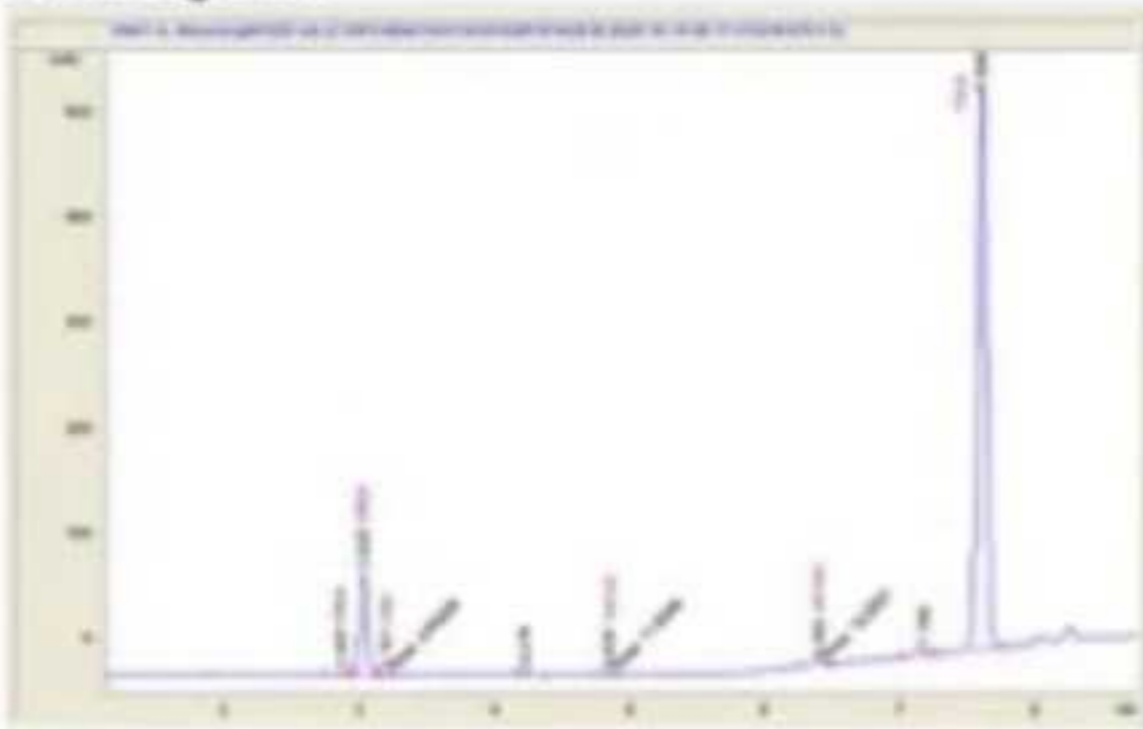
Blue Zlushi - Hemp

Sample Submitted: 10-13-2025; Report Date: 10-20-2025

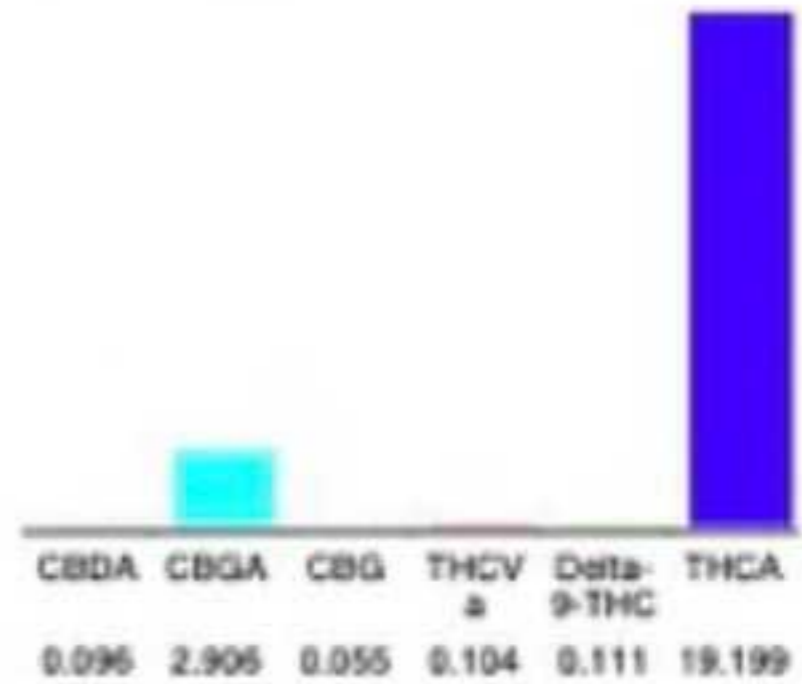
Blue Zlushi - Hemp

Plant Material: Hemp Flower

Chromatogram



Cannabinoid Profile



Cannabinoid Profile by HPLC

0.11%
Delta-9-THC

0.00%
CBD

22.47%
Total Cannabinoids

| Cannabinoid | % wt | mg/g |
|-----------------------------|--------------|---------------|
| CBDA | 0.096 | 0.96 |
| CBGA | 2.906 | 29.06 |
| CBG | 0.055 | 0.55 |
| THCVa | 0.104 | 1.04 |
| Delta-9-THC | 0.111 | 1.11 |
| THCA | 19.2 | 191.99 |
| Total Cannabinoids | 22.47 | 224.7 |
| Calculated Total THC | 16.95 | 169.49 |
| Calculated CBD Yield | 0.08 | 0.84 |

Calculated Total THC = Delta-9-THC + 0.877 * THCA
Calculated Maximum CBD Yield = CBD + 0.877 * CBDA

Marin Analytics, LLC
250 Bel Marin Keys Blvd, Suite D4
Novato, CA 94949

833-321-TEST / info@marinanalytics.com

Mike Clemmons
Lab Manager

Ntegrity hemp

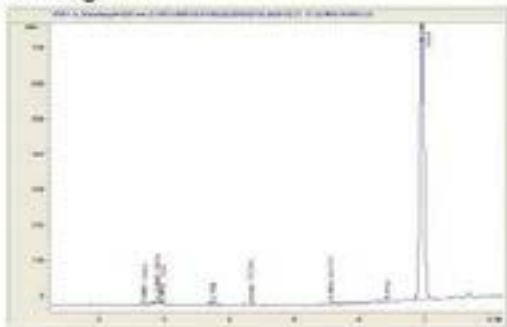
Pinot Noir - Hemp

Sample Submitted: 02-27-2025; Report Date: 03-03-2025

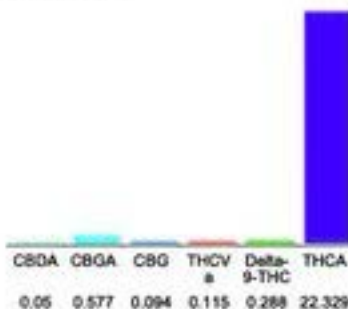
Pinot Noir - Hemp

Plant Material: Hemp Flower

Chromatogram



Cannabinoid Profile



Cannabinoid Profile by HPLC

0.29%

Delta-9-THC

0.00%

CBD

23.45%

Total Cannabinoids

| Cannabinoid | % wt | mg/g |
|-----------------------------|--------------|---------------|
| CBDA | 0.05 | 0.5 |
| CBGA | 0.577 | 5.77 |
| CBG | 0.094 | 0.94 |
| THCVa | 0.115 | 1.15 |
| Delta-9-THC | 0.288 | 2.88 |
| THCA | 22.33 | 223.29 |
| Total Cannabinoids | 23.45 | 234.5 |
| Calculated Total THC | 19.87 | 198.71 |
| Calculated CBD Yield | 0.04 | 0.44 |

Calculated Total THC = Delta-9-THC + 0.877 * THCA

Calculated Maximum CBD Yield = CBD + 0.877 * CBDA

Marin Analytics, LLC

 250 Bel Marin Keys Blvd, Suite D4
 Novato, CA 94949

833-321-TEST / info@marinanalytics.com


Mike Clemmons
 Lab Manager

Ntegrity hemp

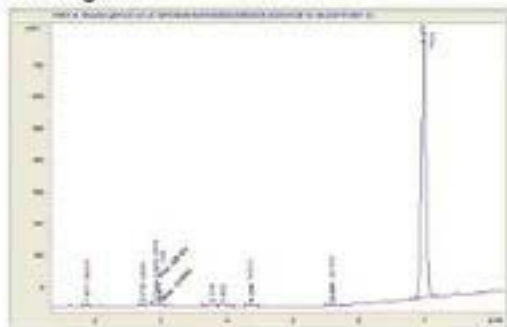
Gelato Flow - Hemp

Sample Submitted: 05-28-2025; Report Date: 06-04-2025

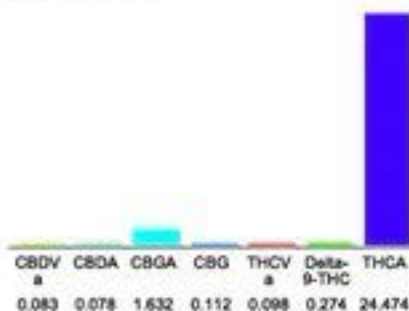
Gelato Flow - Hemp

Plant Material: Hemp Flower

Chromatogram



Cannabinoid Profile



Cannabinoid Profile by HPLC

0.27%

Delta-9-THC

0.00%

CBD

26.75%

Total Cannabinoids

| Cannabinoid | % wt | mg/g |
|-----------------------------|--------------|---------------|
| CBDVa | 0.083 | 0.83 |
| CBDA | 0.078 | 0.78 |
| CBGA | 1.632 | 16.32 |
| CBG | 0.112 | 1.12 |
| THCVa | 0.098 | 0.98 |
| Delta-9-THC | 0.274 | 2.74 |
| THCA | 24.47 | 244.74 |
| Total Cannabinoids | 26.75 | 267.5 |
| Calculated Total THC | 21.74 | 217.38 |
| Calculated CBD Yield | 0.07 | 0.68 |

Calculated Total THC = Delta-9-THC + 0.877 * THCA

Calculated Maximum CBD Yield = CBD + 0.877 * CBDA

Marin Analytics, LLC

 250 Bel Marin Keys Blvd, Suite D4
 Novato, CA 94949

833-321-TEST / info@marinanalytics.com


Mike Clemmons
 Lab Manager